

## Area overview profile for Temple Newsam ward, using GP data

This profile presents a high level summary of GP record data sets for the Temple Newsam ward, using closest match Middle Super Output Areas (MSOAs) to calculate the area.

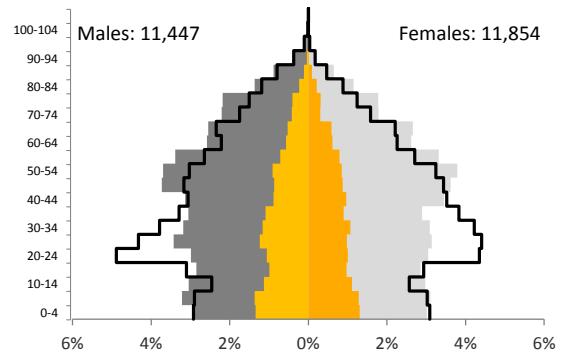
All wards are ranked to display variation across Leeds and this one is outlined in red.

If the ranked wards are significantly above or below the Leeds rate then they are coloured as a dark grey bar, otherwise they are shown as white to indicate they are not significantly different to Leeds.

Leeds overall is shown as a horizontal black line, Deprived Leeds\* (or the most deprived fifth\*\*) is an orange dashed horizontal. The MSOAs that make up this ward are overlaid as red circles and often range widely.

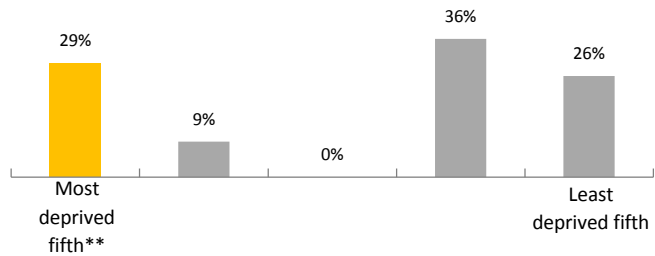
### Population: 23,301

Comparison of ward in grey (orange if within most deprived fifth of Leeds) and Leeds age structures (outlined in black) January 2016.



### Deprivation

Proportions of this population within each deprivation 'quintile' or fifth of Leeds (Leeds therefore has equal proportions of 20%) January 2016.



Pupil ethnicity, top 5	Ward	% Ward	% Leeds
White - British	3,032	77%	67%
Black - African	256	7%	5%
Any other white background	147	4%	4%
Any other mixed background	68	2%	2%
White and Black Caribbean	67	2%	2%

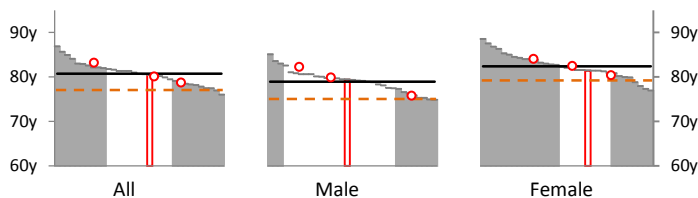
Pupil language, top 5	Ward	% Ward	% Leeds
English	3,440	88%	80%
Polish	68	2%	1%
Other than English	40	1%	1%
blank	34	1%	2%
French	26	1%	1%

(Pupil data from January 2016 School Census)

GP recorded ethnicity, top 5	% Ward	% Leeds
White British	70%	60%
(blank)	14%	12%
Other White Background	5%	9%
Not Stated	3%	2%
Black African	3%	2%

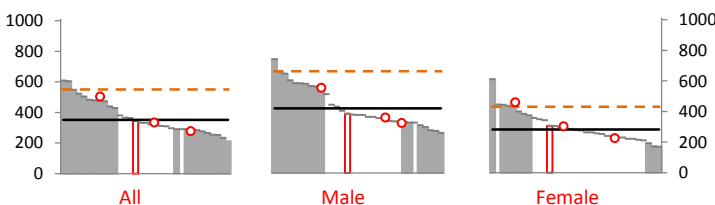
(January 2016)

### Life expectancy at birth, 2011-13 ranked wards



(years)	All	Males	Females
Ward	80.4	79.4	81.4
Leeds resident	80.7	78.9	82.4
Deprived Leeds*	77.0	75.0	79.2

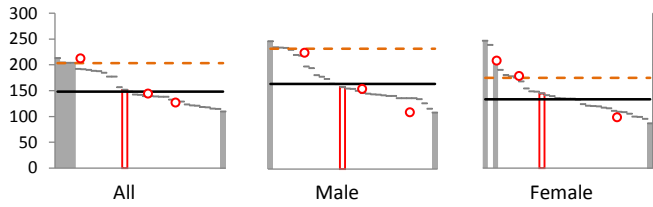
### All cause mortality - under 75s, 2010-14 ranked wards



(DSR per 100,000)	All	Males	Females
Ward	346	388	306
Highest MSOAs in ward	502	557	458
Lowest MSOAs in ward	275	327	224
Leeds resident	351	423	281
Deprived fifth**	550	668	431

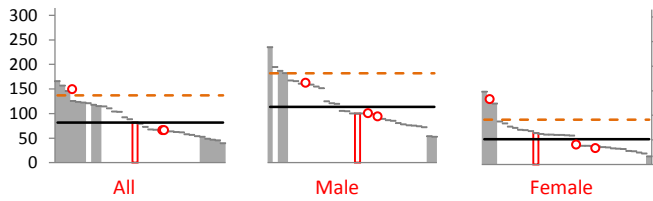
DSR - Directly Standardised Rate removes the effect that age structures have on data, allows comparison of 'young' and 'old' areas

**Cancer mortality - under 75s, 2010-14 ranked wards**



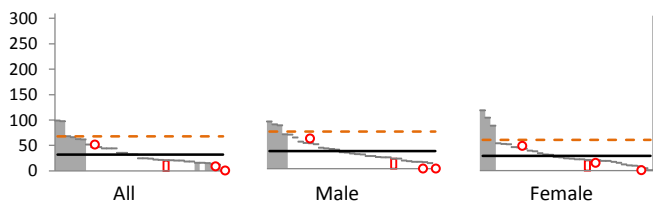
(DSR per 100,000)	All	Males	Females
Ward	151	159	144
Highest MSOAs in area	212	225	208
Lowest MSOAs in area	126	110	97
Leeds resident	148	165	133
Deprived fifth**	204	234	175

**Circulatory disease mortality - under 75s, 2010-14 ranked wards**



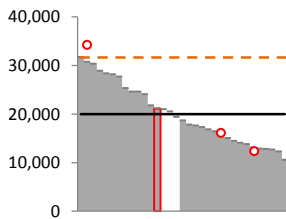
(DSR per 100,000)	All	Males	Females
Ward	82	100	64
Highest MSOAs in area	149	162	132
Lowest MSOAs in area	66	94	32
Leeds resident	82	113	51
Deprived fifth	137	182	91

**Respiratory disease mortality - under 75s, 2010-14 ranked wards**



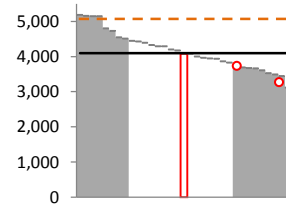
(DSR per 100,000)	All	Males	Females
Ward	20	20	21
Highest MSOAs in area	51	60	49
Lowest MSOAs in area	0	0	0
Leeds resident	32	35	29
Deprived fifth	68	74	61

**GP data. Quarterly data collection, January 2016 (DSR per 100,000)**



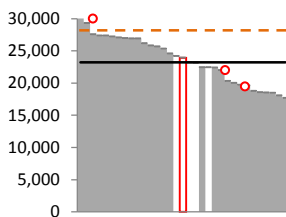
**Smoking (16y+)**

Ward	21,125
Leeds	20,022
Deprived Leeds *	31,689



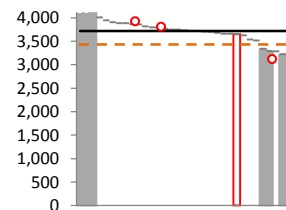
**CHD**

Ward	4,079
Leeds	4,098
Deprived Leeds	5,069



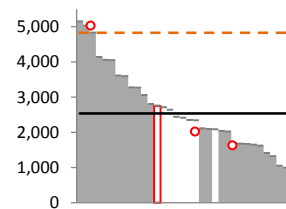
**Adult obesity (BMI>30)**

Ward	23,907
Leeds	23,246
Deprived Leeds	28,183



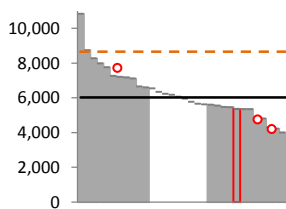
**Cancer**

Ward	3,649
Leeds	3,719
Deprived Leeds	3,432



**COPD**

Ward	2,746
Leeds	2,537
Deprived Leeds	4,825



**Diabetes**

Ward	5,349
Leeds	6,015
Deprived Leeds	8,655

The GP data charts show all 33 wards in rank order by directly standardised rate (DSR). DSR removes the effect that differing age structures have on data, and allow comparison of 'young' and 'old' areas. GP data can only reflect those patients who visit their doctor. Certain groups within the population are known to present late, or not at all, therefore it is important to remember that GP data is not the whole of the picture. This data includes all Leeds GP registered patients who live within the ward. However, some areas of Leeds have low numbers of patients registered at Leeds practices; if too few then their data is excluded from the data here. Obesity here is the rate within the population who have a recorded BMI.

\*Deprived Leeds: areas of Leeds within the 10% most deprived in England, using the Index of Multiple Deprivation. \*\*Most deprived fifth, or quintile of Leeds - divides Leeds into five areas from most to least deprived, using IMD2015 LSOA scores adjusted to MSA2011 areas using mid-2012 GP registered population weighting. Ordnance Survey PSMA Data, Licence Number 100050507, (c) Crown Copyright 2011, All rights reserved. Mortality data copyright (c) 2016, re-used with the permission of the Health and Social Care Information Centre / NHS Digital. All rights reserved. GP data courtesy of Leeds GPs, only includes Leeds registered patients who are resident in the city.